



American Legion Auxiliary

Department of Minnesota
State Veterans Service Building
20 W 12th St. #314 St Paul MN 55155
Telephone 651-224-7634 Fax 651-224-5243
Toll Free 1-888-217-9598
Email – deptoffice@mnala.org
Website - www.mnala.org

Revised September 2019

PATTERNS

Minnesota has four (4) VA Medical Centers and (5) State Veteran Homes where we provide regularly scheduled volunteer service and donate items that their residents may need. Auxiliary members that sew are requested to assist by providing some of the items the residents need. The costs for these items can come from Poppy funds. Before you make items for any facility, please contact the American Legion Auxiliary Hospital Representative to see if they are in need and also contact them when you plan on delivering goods to them. Make sure you include your Unit's name, address, number and district so your Unit gets the proper recognition for your contribution.

NO knitted or crocheted afghans or throws for any of the patterns attached **EXCEPT FOR** the Minneapolis VA Hospital.

DO NOT send your finished articles to the Department Office

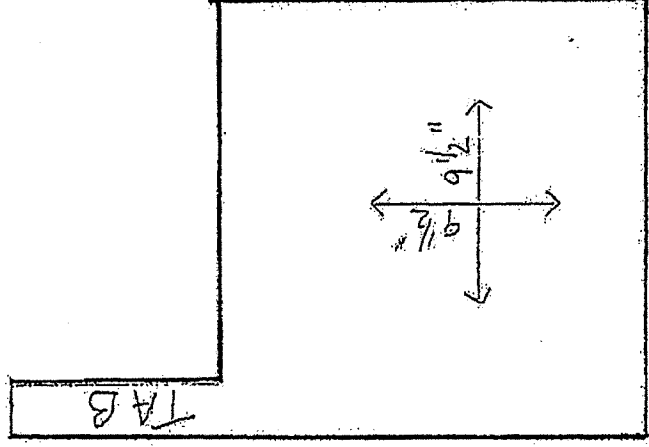
Please distribute the attached patterns and directions for making articles to your interested members.

Items should be marked with a label identifying that they were donated by "The American Legion Auxiliary". Labels are available through The American Legion Flag and Emblem Sales. To order labels use the part number 320.110 and the price for 100 labels is \$12.95 plus shipping.
Order online at <http://emblem.legion.org>, call 1-888-453-4466, fax 1-317-630-1381 or mail order to American Legion Emblem Sales, PO Box 36400, Indianapolis, IN 46236-0460.

PATTERN #2 – OXYGEN TUBING BAG

Make bags from strong type of washable material

Finished is approximately 9 1/2" x 9 1/2" and tab should be about 4" (double for the tab) so it will fit over the handle on a wheelchair. The tab can be sewn right into the seam or leave one end of the tab open and put a little piece of velcro on one end of the tab and one on the bag. The inside top seam can be finished off on the inside with bias tape for a more finished look and makes the bag a little sturdier.



Used at: Fergus Falls Veteran Homes

PATTERN #3 - COMFORT BOXES

Use plastic school boxes with the following items enclosed:

- Notepad with pen
- Toothbrush and Toothpaste
- Lotion and Shampoo (small size)
- Comb and Brush
- Deck of Playing Cards
- Unisex deodorant

Used at: Fargo & Minneapolis VAHCS

PATTERN #4 - LAUNDRY BAGS

Use plain blue washable denim or similar sturdy fabric. Make bag 28" x 38" with a 1" heading and a 1" casing for a double draw string. Please make drawstring long enough. All facilities use these bags.

Do NOT use yarn.

Used at: St. Cloud VAHCS, Minneapolis VAHCS and Hastings Veterans Home

PATTERN #5 - HEART PILLOW - MUST BE VERY FIRM

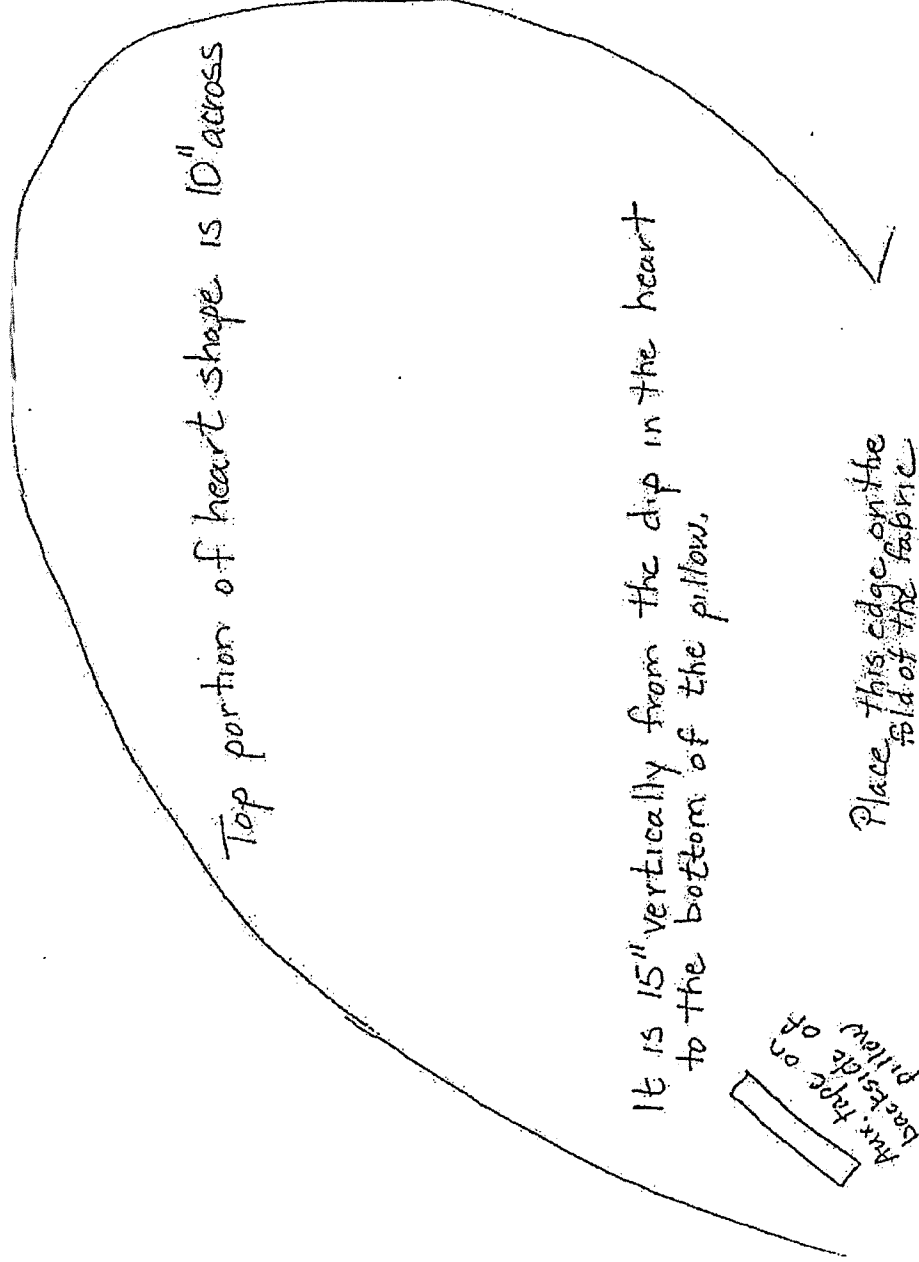
Material: 1/2 yard of fabric will make one pillow (patriotic colors and designs preferred)

Stuffing: 5 pounds of batting will make 6 pillows
Finished pillows need to be 18" to 20"

Attach "American Legion Auxiliary" branding to the back of the pillow BEFORE you sew it together. Snip curved areas to the seam line. Leave opening for stuffing. Stuff firmly and stitch opening shut. Stuffing must be very firm in these pillows. Please note that material scraps can be saved for lap robes.

Pattern: Heart shape with a width of 10" across the 1/2 of the top of the heart and 15" from the dip of the center of the pillow to the bottom of the pillow. Measurements are given below along with location of Auxiliary tape but you will need to make your own paper pattern.

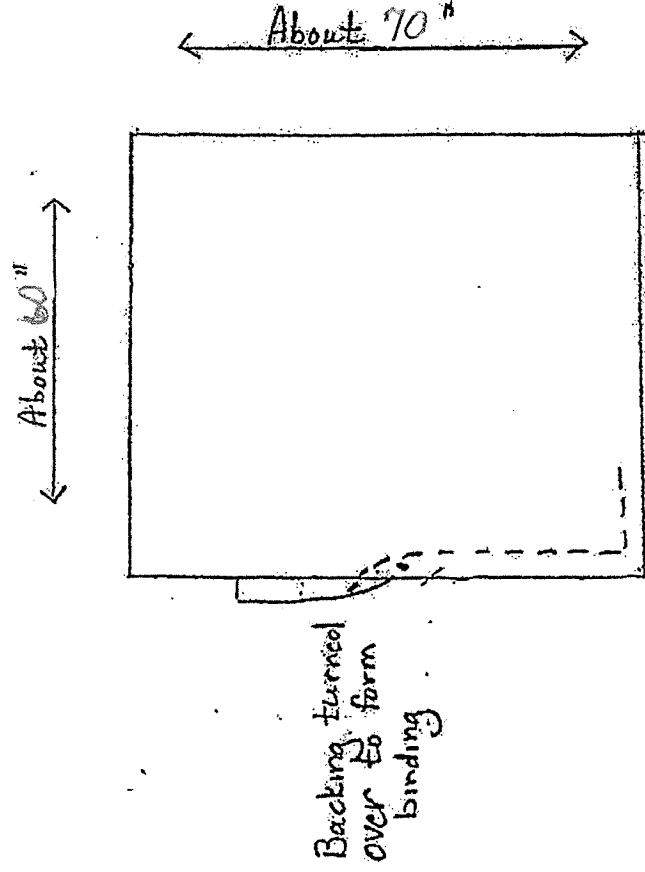
Used at: Fargo & Minneapolis VAHCS



PATTERN #6 – BED THROW

Material: Washable material; cotton or flannel backed.

Special instructions: If square quilt pieces are used, please sew securely between each piece to help keep them intact during laundering. Backing may be turned over edge to form binding. All bed throws should be 45 x 55.



Quilting Instructions:

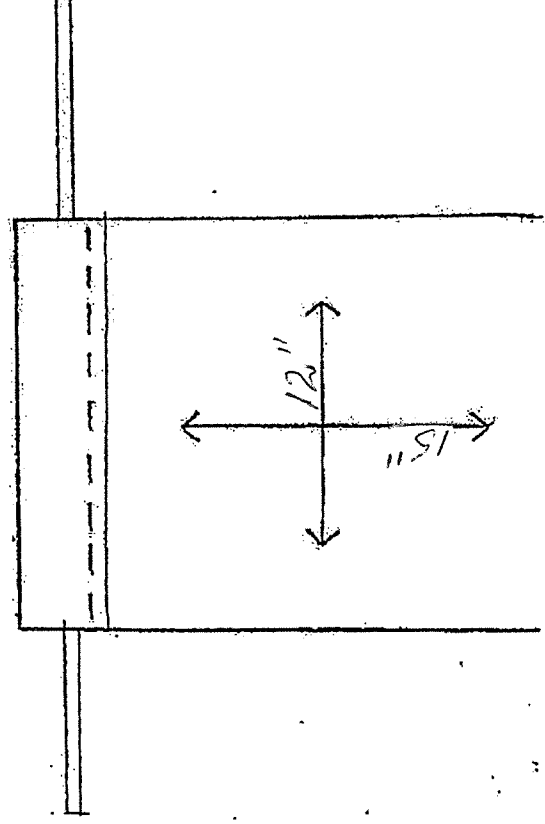
1. Cut squares 10" square
2. Make up 7 rows of 6 squares each
3. Piece together with $\frac{1}{4}$ " to $\frac{1}{2}$ " seams
4. Bind with seam binding or turn over edge of backing to form binding.

Used at: Fargo, Minneapolis and Sioux Falls VAHCS and Minneapolis Veterans Home

PATTERN #8 - TOTE BAG

Make bags from strong type of washable material

Size: 12 x 15" with drawstring at top (no yarn drawstrings)



Used at: St. Cloud, Minneapolis and Sioux Falls VAHCS

PATTERN #9 - WHEEL CHAIR/WALKER BAG - FOR BACK - with tie straps

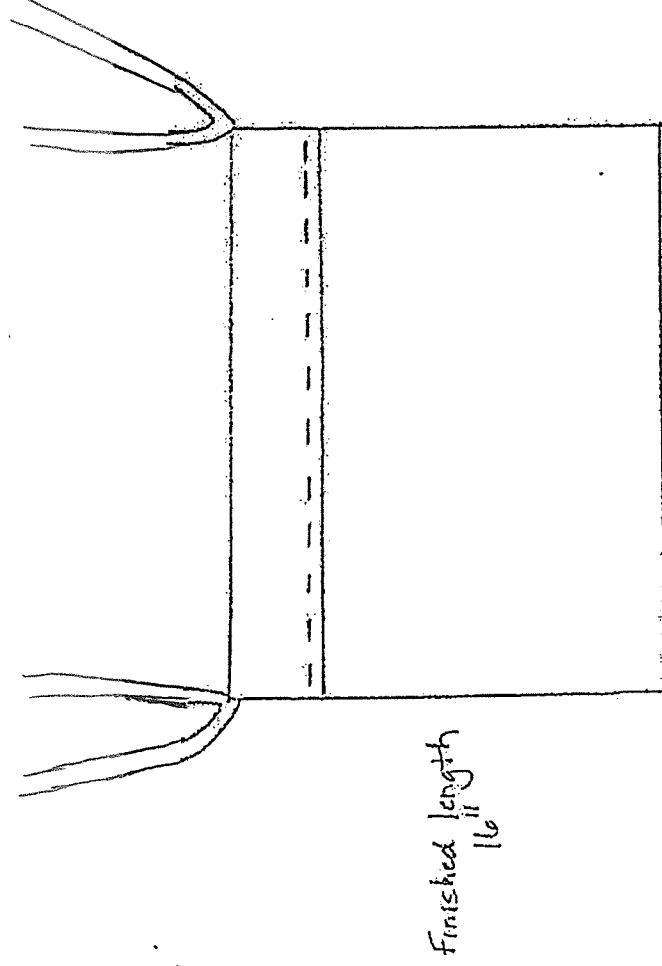
Cut fabric piece 36" x 22"

Bag: Fold in half with right sides together (size now will be 18" x 21") and stitch the two side edges leaving the side opposite the fold open. Hem open end with a 1" hem and double stitch folded edges.

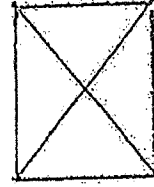
Straps: Cut fabric 4" wide and 16-18" long and fold like bias tape. Stitch open folded edges together. Cut strip in half so that you have two pieces of strapping each 8-9" long and about 1" wide. Fold each strap piece in half and position one of the strap pieces on the inside hem of the bags side seams. Stitch through all layers on each side to securely fasten straps. (example: stitch a square the size of your hem and then stitch an X in it)

Tie Straps: Sew two straps on each side so you can tie the two straps together or velcro. Please NO yarn.

Used at: Fargo, St Cloud & Mpls. VACHS and Luverne, Fergus Falls and Minneapolis Veterans Home



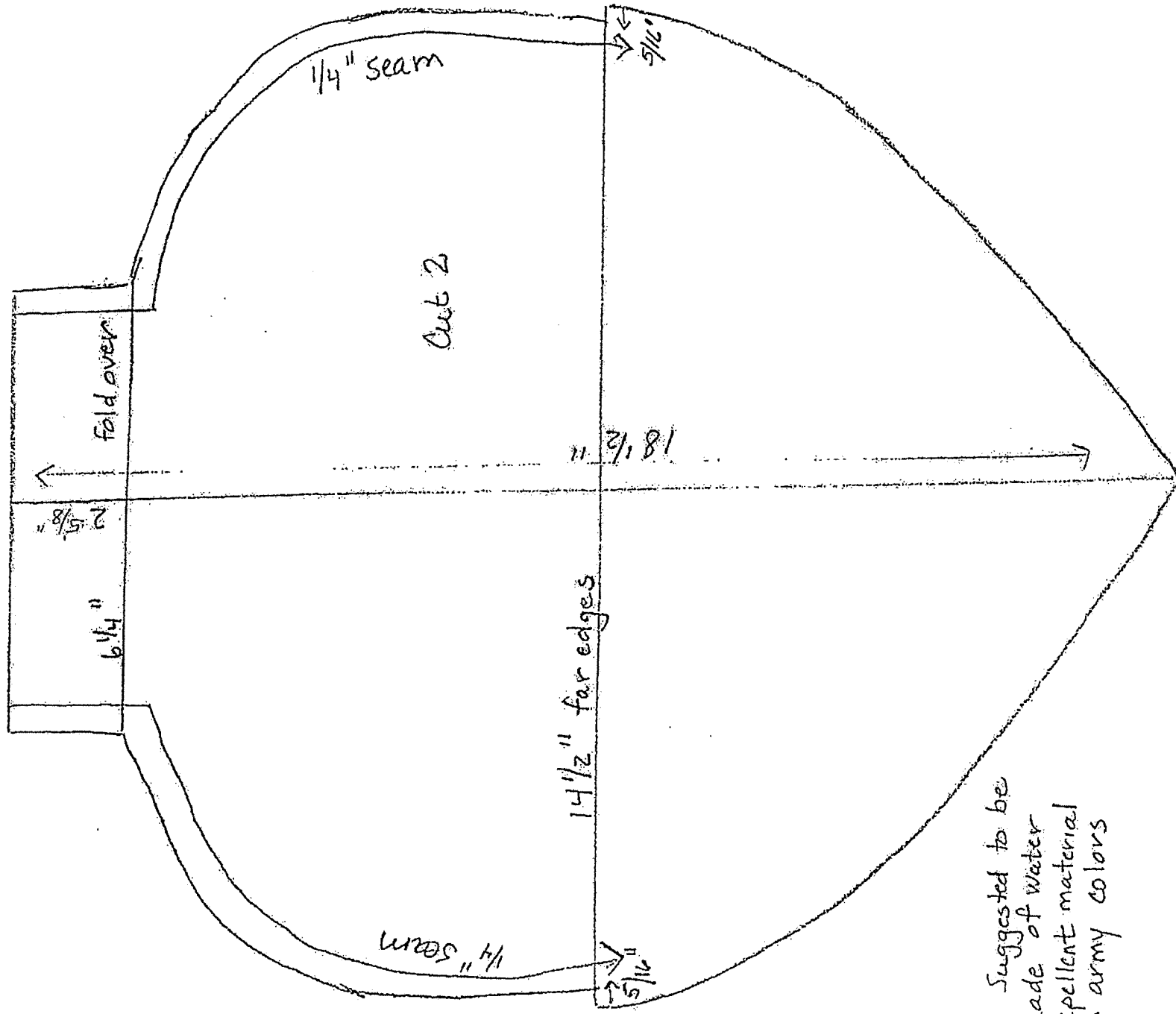
Finished width 20"



Strap stitching
example

PATTERN #11 - URINE BAG COVER

Used at: Fergus Falls



Suggested to be
made of water
repellent material
in army colors

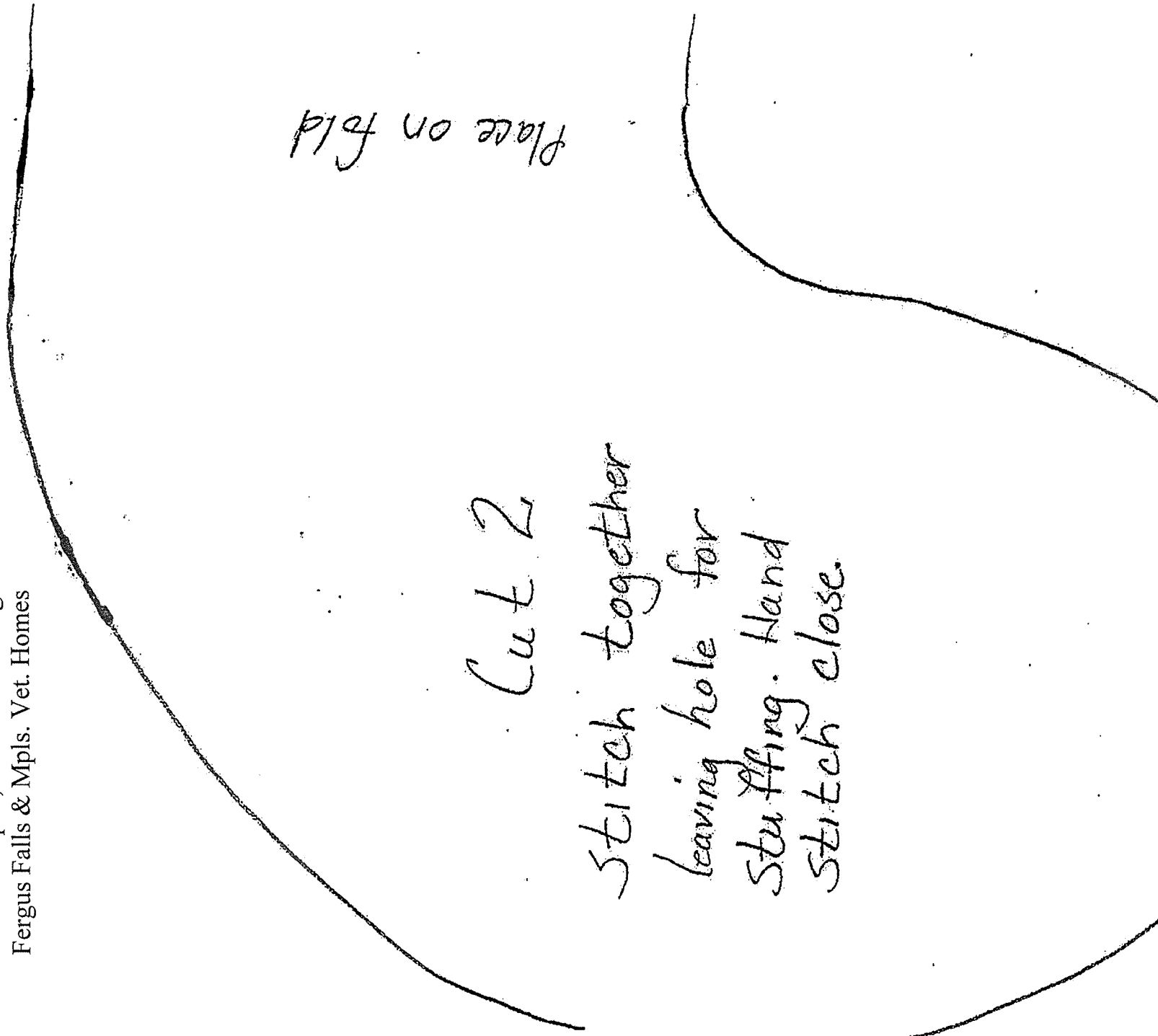
PATTERN #12 - NECK PILLOW (MUST BE VERY FIRM)

FINISHED SIZE-PLEASE ADD 1/2"
SEAM ALLOWANCE TO PATTERN
USE APPROPRIATE PATTERNED
MATERIAL, NOTHING ROUGH
Used at: Mpls., St. Cloud & Fargo VAHCS
Fergus Falls & Mpls. Vet. Homes

Place on fold

Cut 2

Stitch together
leaving hole for
stuffing. Hand
stitch close.



PATTERN #13 – CLOTH BAG FOR CHILDRENS ACTIVITY SUPPLIES

Used at: Fargo & Minneapolis VAHCS

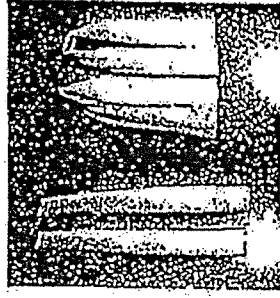
1/2 Yard of Fabric or Felt (should be approximately 18" x 36") is needed for each bag.



Start out by cutting your fabric or felt for your tote bag. You will need 3 pieces:

- Cut one piece that is 12" x 30"
- Cut two pieces that each measure 4" x 18"

To sew the sides of your tote bag, fold your 12" x 30" piece of felt in half so it is 12" x 15". Sew up each side, using about a 1/2" seam allowance. Your tote bag will now have two sewn sides directly across from each other, it will also have a folded edge and an open edge directly across from each other.

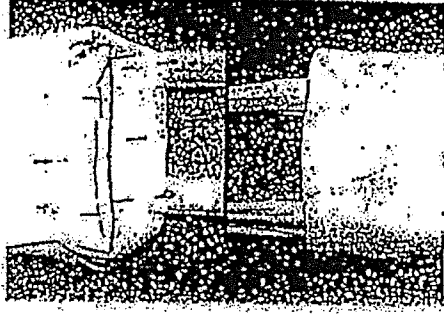


To make the tote bag handles, fold both 4" x 18" piece of fabric or felt in half. Sew up the long edge of each piece, leaving about a 1/2" seam allowance. Turn the handles right side out. Lay the tote bag on its side. At the top edge of the tote bag, measure in 2" from each seam. Mark these spots with a straight pin. Line up the outside edge of one end of a handle with one of the straight pins.

Hold the end of the handle so it lines up with the top edge of the tote bag and pin in place. Pin the other end of the handle in place next to the other straight pin using this same method. Make sure the side of the handle with the seam is facing up at this point.

Repeat this on the other side of the tote bag for the other handle.

Using a 1/2-inch seam allowance, stitch around the top edge of the bag to secure the handles in place.



Minneapolis VA Medical Center Children's Activity Bags

Here are some suggestions of activities that can be put together for distribution to children in our busier clinics. Fill your bags with some or all of the items listed

- Small mini books
- Stickers
- Word search pages
- Dot to dot puzzles
- Foam shapes (self-adhesive)
- Coloring pages or coloring book
- Crayons (non-toxic)
- Lacing cards
- Homemade mini felt board and shapes or face parts
- Ziploc bags (sandwich size)

Note: Please do not include small items/pieces that can be swallowed.

Thank you for your ongoing support of our veterans and their families!

PATTERN #14 – BIB WITHOUT POCKET, TIES OR VELCRO

Any color terry cloth towels 24" x 44". Any color bias tape.

- Step 1: Make pattern out of tag board or cardboard. Also need 7" plate or circle to make pattern.
- Step 2: Fold towel in half lengthwise
- Step 3: Place pattern on fold of towel with top of pattern at top of towel.
- Step 4: With pen, trace the half circle. Keeping towel folded, cut out half circle. (Dispose of or Keep cut out piece for a different project. Sew two circles together for nice washcloths)
- Step 5: Cut slit on fold from top to cut out part.
- Step 6: Turn slit edges under $\frac{1}{2}$ " and another $\frac{1}{2}$ " and sew with medium zig-zag stitch.
(no bias tape on these edges)
- Step 7: Sew bias tape around the open circle (neck area).

Used at: Luverne Veterans Home

