

AMERICAN LEGION AUXILIARY

Bulletin #24 as of 3/11/2025

2025 Membership

Member-opoly

"Finding Members in Everyday Places"

Your Leader is Rich Aunty Pennybags, Hope Wilson



DISTRICT	# of Units	Goal	Period Gain	Membership To Date	Percent of Goal	Membership Last Year 3/14/24	Difference from Last Year
One	47	3,341	16	2,947	88.21%	3,009	-62
Two	70	3,444	6	2,926	84.96%	3,057	-131
Three	46	3,476	43	3,060	88.03%	3,108	-48
Four	7	508	8	404	79.53%	426	-22
Five	7	463	0	290	62.63%	283	7
Six	60	4,469	16	4,011	89.75%	4,049	-38
Seven	52	2,561	5	2,198	85.83%	2,335	-137
Eight	20	1,117	2	910	81.47%	1012	-102
Nine	45	2,944	9	2,511	85.29%	2,590	-79
Ten	41	3,391	13	2,778	81.92%	2,899	-121
1982	1	331	0	248	74.92%	260	-12
Department Total	396	26,045	118	22,283	85.56%	23,028	-745

1st
89.75%
District 6

2nd
88.21%
District 1

3rd
88.03%
District 3

4th
85.83%
District 7

5th
85.29%
District 9

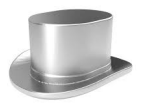
6th
84.96%
District 2

7th
81.92%
District 10

8th
81.47%
District 8

9th
79.53%
District 4

10th
62.63%
District 5



2024-2025 Membership Bulletin

Dist	Unit	Unit Location	2025 DNO	Goal Dates Set By National				Junior	Senior	Total	Percent to Date	100%+ Date
				85% by 3/15/25	95% by 5/23/25	100% by 7/4/25	102% by 7/26/25					
00	1982	St Paul	331	281	314	331	338	4	244	248	74.92%	
00 Total			331					4	244	248	74.92%	
01	0009	Winona	114	3/3/25	108	114	116	3	102	105	92.11%	
01	0040	Lanesboro	101	86	96	101	103	0	85	85	84.16%	
01	0050	Wabasha	111	1/14/25	3/3/25	111	113	2	107	109	98.20%	
01	0052	Blooming Prairie	89	76	85	89	91	1	67	68	76.40%	
01	0056	Albert Lea	205	174	195	205	209	0	171	171	83.41%	
01	0068	Spring Valley	48	10/26/24	46	48	49	4	37	41	85.42%	
01	0075	New Richland	32	10/26/24	30	32	33	0	30	30	93.75%	
01	0077	Owatonna	98	1/28/25	93	98	100	1	83	84	85.71%	
01	0081	Harmony	44	3/3/25	42	44	45	12	27	39	88.64%	
01	0090	Lewiston	29	2/21/25	28	29	30	4	26	30	103.45%	3/3/25
01	0091	Austin	88	75	84	88	90	0	74	74	84.09%	
01	0092	Rochester	115	12/9/24	109	115	117	8	101	109	94.78%	
01	0094	Rushford	50	12/17/24	48	50	51	1	44	45	90.00%	
01	0105	Lyle	45	10/26/24	43	45	46	10	30	40	88.89%	
01	0110	Lake City	37	1/14/25	35	37	38	3	30	33	89.19%	
01	0119	Byron	14	10/8/24	13	14	14	0	15	15	107.14%	10/15/24
01	0140	Grand Meadow	63	1/28/25	1/28/25	63	64	6	54	60	95.24%	
01	0146	Adams	120	3/3/25	114	120	122	9	93	102	85.00%	
01	0161	Le Roy	42	12/17/24	40	42	43	14	25	39	92.86%	
01	0164	Stewartville	164	1/14/25	156	164	167	8	147	155	94.51%	
01	0179	Plainview	113	96	107	113	115	4	78	82	72.57%	
01	0190	Saint Charles	6	5	6	6	6	0	6	6	100.00%	12/17/24
01	0191	Caledonia	64	12/9/24	61	64	65	2	56	58	90.63%	
01	0197	Chatfield	18	9/17/24	17	18	18	0	17	17	94.44%	
01	0228	Waseca	229	195	218	229	234	11	183	194	84.72%	
01	0249	Spring Grove	73	62	69	73	74	2	60	62	84.93%	
01	0264	Glenville	86	12/9/24	1/14/25	86	88	14	77	91	105.81%	2/11/25
01	0295	West Concord	26	22	25	26	27	0	18	18	69.23%	
01	0299	Mabel	106	12/31/24	101	106	108	7	86	93	87.74%	
01	0330	Hayfield	175	3/3/25	166	175	179	10	139	149	85.14%	
01	0333	Kasson	125	106	119	125	128	3	100	103	82.40%	
01	0369	Wykoff	18	10/15/24	17	18	18	0	20	20	111.11%	11/5/24
01	0384	Dodge Center	56	12/9/24	53	56	57	6	44	50	89.29%	
01	0404	Alden	36	31	34	36	37	2	27	29	80.56%	
01	0422	Claremont	20	12/25/24	12/25/24	20	20	3	16	19	95.00%	
01	0423	Houston	109	1/14/25	104	109	111	1	95	96	88.07%	
01	0498	Hokah	18	11/12/24	17	18	18	0	17	17	94.44%	
01	0526	Peterson	44	37	42	44	45	1	35	36	81.82%	
01	0544	Ostrander	9	8	9	9	9	0	7	7	77.78%	
01	0551	Eyota	88	2/21/25	84	88	90	2	73	75	85.23%	
01	0552	Freeborn	55	9/17/24	9/17/24	11/26/24	56	11	46	57	103.64%	11/26/24
01	0573	Elgin	8	12/25/24	8	8	8	0	7	7	87.50%	
01	0579	Millville	39	11/26/24	37	39	40	0	40	40	102.56%	12/17/24
01	0587	Waldorf	15	11/26/24	14	15	15	1	13	14	93.33%	
01	0588	Mazeppa	34	12/17/24	32	34	35	0	29	29	85.29%	
01	0595	La Crescent	148	12/31/24	141	148	151	8	124	132	89.19%	
01	0637	Whalan	14	9/24/24	13	14	14	0	12	12	85.71%	
01 Total			3341					174	2773	2947	88.21%	

Dist	Unit	Unit Location	2025 DNO	Goal Dates Set By National				Junior	Senior	Total	Percent to Date	100%+ Date
				85% by 3/15/25	95% by 5/23/25	100% by 7/4/25	102% by 7/26/25					
02	0004	Lakefield	46	39	44	46	47	3	34	37	80.43%	
02	0006	Pipestone	49	42	47	49	50	0	41	41	83.67%	
02	0007	Sleepy Eye	27	3/3/25	26	27	28	0	23	23	85.19%	
02	0010	Lake Benton	40	12/17/24	38	40	41	0	34	34	85.00%	
02	0011	Mankato	55	12/9/24	52	55	56	4	46	50	90.91%	
02	0019	Madelia	64	54	61	64	65	0	51	51	79.69%	
02	0032	Adrian	32	27	30	32	33	2	20	22	68.75%	
02	0033	Saint James	52	3/3/25	49	52	53	1	45	46	88.46%	
02	0036	Fairmont	114	1/14/25	108	114	116	4	101	105	92.11%	
02	0038	Redwood Falls	54	3/3/25	51	54	55	2	44	46	85.19%	
02	0041	Lamberton	96	12/25/24	1/28/25	96	98	8	87	95	98.96%	
02	0042	Edgerton	31	12/25/24	29	31	32	0	27	27	87.10%	
02	0064	Slayton	43	37	41	43	44	0	33	33	76.74%	
02	0082	Winnebago	22	19	21	22	22	3	12	15	68.18%	
02	0089	Blue Earth	88	75	84	88	90	0	68	68	77.27%	
02	0115	Truman	8	7	8	8	8	0	12	12	150.00%	10/26/24
02	0123	Luverne	29	12/31/24	28	29	30	0	25	25	86.21%	
02	0130	Jackson	125	106	119	125	128	14	80	94	75.20%	
02	0132	New Ulm	147	3/3/25	140	147	150	1	130	131	89.12%	
02	0133	Jasper	24	12/17/24	23	24	24	0	22	22	91.67%	
02	0165	Bricelyn	30	26	29	30	31	3	17	20	66.67%	
02	0195	Hendricks	29	25	28	29	30	0	23	23	79.31%	
02	0196	Ellsworth	18	15	17	18	18	0	15	15	83.33%	
02	0206	Windom	46	12/31/24	44	46	47	1	39	40	86.96%	
02	0210	Wells	151	128	143	151	154	10	97	107	70.86%	
02	0224	Heron Lake	36	12/9/24	34	36	37	0	33	33	91.67%	
02	0244	Comfrey	32	10/1/24	11/5/24	32	33	1	30	31	96.88%	
02	0257	Springfield	130	111	124	130	133	1	109	110	84.62%	
02	0263	Wabasso	90	12/17/24	86	90	92	15	67	82	91.11%	
02	0267	Walnut Grove	80	12/9/24	76	80	82	4	66	70	87.50%	
02	0269	Madison Lake	26	12/9/24	12/9/24	26	27	10	16	26	100.00%	2/21/25
02	0274	Milroy	26	12/17/24	25	26	27	0	23	23	88.46%	
02	0276	Amboy	29	25	28	29	30	3	21	24	82.76%	
02	0285	Lake Wilson	100	12/25/24	95	100	102	6	86	92	92.00%	
02	0286	Sanborn	40	11/12/24	12/31/24	40	41	4	37	41	102.50%	3/3/25
02	0287	Minnesota Lake	71	60	67	71	72	6	53	59	83.10%	
02	0294	Lake Crystal	142	3/8/25	135	142	145	9	121	130	91.55%	
02	0306	Vesta	0	DISBANDED				0	0	0	0.00%	10/24/24
02	0309	Belview	36	31	34	36	37	2	34	36	100.00%	3/3/25
02	0318	Fulda	32	27	30	32	33	0	27	27	84.38%	
02	0322	Currie	55	47	52	55	56	4	40	44	80.00%	
02	0329	Cambria	12	10	11	12	12	0	10	10	83.33%	
02	0338	Chandler	24	11/5/24	11/5/24	24	24	0	23	23	95.83%	
02	0356	Sherburn	39	10/8/24	37	39	40	3	32	35	89.74%	
02	0365	Hanska	40	34	38	40	41	3	29	32	80.00%	
02	0373	Trimont	32	27	30	32	33	0	25	25	78.13%	
02	0386	Dundee	21	11/12/24	20	21	21	0	18	18	85.71%	
02	0391	Storden	29	11/26/24	28	29	30	0	27	27	93.10%	
02	0399	Hills	12	1/14/25	1/14/25	1/14/25	12	0	13	13	108.33%	1/14/25
02	0401	Jeffers	18	15	17	18	18	0	15	15	83.33%	
02	0454	Kiester	21	2/21/25	20	21	21	0	19	19	90.48%	
02	0461	Round Lake	73	2/21/25	69	73	74	6	58	64	87.67%	

Dist	Unit	Unit Location	2025 DNO	Goal Dates Set By National				Junior	Senior	Total	Percent to Date	100%+ Date
				85% by 3/15/25	95% by 5/23/25	100% by 7/4/25	102% by 7/26/25					
02	0464	Brewster	61	2/11/25	58	61	62	12	43	55	90.16%	
02	0467	Lucan	23	20	22	23	23	0	19	19	82.61%	
02	0475	Saint Clair	34	29	32	34	35	0	25	25	73.53%	
02	0478	Hardwick	19	11/26/24	18	19	19	1	18	19	100.00%	2/21/25
02	0506	Ruthton	21	1/14/25	20	21	21	0	18	18	85.71%	
02	0519	Clements	15	10/24/24	14	15	15	0	13	13	86.67%	
02	0522	Northrop	52	12/17/24	3/8/25	52	53	3	48	51	98.08%	
02	0534	Holland	36	31	34	36	37	0	29	29	80.56%	
02	0553	Welcome	43	37	41	43	44	1	30	31	72.09%	
02	0561	Lewisville	46	39	44	46	47	0	35	35	76.09%	
02	0569	Easton	68	12/9/24	65	68	69	5	58	63	92.65%	
02	0576	Avoca	38	11/5/24	36	38	39	10	26	36	94.74%	
02	0608	Okabena	63	54	60	63	64	1	47	48	76.19%	
02	0614	Sioux Valley	8	2/21/25	8	8	8	0	7	7	87.50%	
02	0616	Good Thunder	61	12/9/24	58	61	62	12	42	54	88.52%	
02	0617	Eagle Lake	123	105	117	123	125	1	76	77	62.60%	
02	0632	Dovray	19	16	18	19	19	0	8	8	42.11%	
02	0636	Lismore	48	11/26/24	11/26/24	48	49	2	45	47	97.92%	
02 Total			3444					181	2745	2926	84.96%	
03	0002	Shakopee	78	3/3/25	74	78	80	1	68	69	88.46%	
03	0037	Saint Peter	76	2/21/25	72	76	78	1	64	65	85.53%	
03	0043	Faribault	171	145	162	171	174	5	135	140	81.87%	
03	0045	New Prague	68	12/17/24	3/8/25	68	69	1	64	65	95.59%	
03	0047	Hastings	29	3/3/25	28	29	30	5	20	25	86.21%	
03	0054	Red Wing	172	12/31/24	163	172	175	1	150	151	87.79%	
03	0057	Chaska	158	134	150	158	161	5	129	134	84.81%	
03	0065	Rosemount	57	12/17/24	54	57	58	2	59	61	107.02%	1/28/25
03	0079	Montgomery	142	121	135	142	145	10	106	116	81.69%	
03	0084	Northfield	36	31	34	36	37	4	25	29	80.56%	
03	0095	Glencoe	16	14	15	16	16	0	13	13	81.25%	
03	0096	Hutchinson	174	12/9/24	165	174	177	11	148	159	91.38%	
03	0098	St Paul Park	127	108	121	127	130	4	102	106	83.46%	
03	0108	Le Center	112	12/17/24	106	112	114	10	113	123	109.82%	1/28/25
03	0125	Stewart	38	10/15/24	36	38	39	2	31	33	86.84%	
03	0141	Silver Lake	65	11/5/24	62	65	66	0	60	60	92.31%	
03	0143	Brownston	19	2/21/25	18	19	19	0	18	18	94.74%	
03	0144	Belle Plaine	105	89	100	105	107	6	81	87	82.86%	
03	0149	Morristown	89	76	85	89	91	9	93	102	114.61%	2/21/25
03	0150	Waconia	80	1/28/25	3/11/25	80	82	0	76	76	95.00%	
03	0184	Pine Island	89	2/11/25	3/8/25	89	91	3	83	86	96.63%	
03	0189	Farmington	31	12/17/24	29	31	32	0	28	28	90.32%	
03	0207	Cleveland	41	12/25/24	39	41	42	0	38	38	92.68%	
03	0225	Forest Lake	202	2/21/25	192	202	206	7	199	206	101.98%	3/11/25
03	0300	Lafayette	21	18	20	21	21	0	16	16	76.19%	
03	0311	Elysian	180	12/25/24	171	180	184	14	149	163	90.56%	
03	0314	Winthrop	25	21	24	25	26	0	19	19	76.00%	
03	0343	Norwood	24	10/26/24	12/9/24	24	24	3	21	24	100.00%	12/25/24
03	0380	Kilkenny	14	2/21/25	13	14	14	0	12	12	85.71%	
03	0407	Winsted	46	39	44	46	47	1	31	32	69.57%	
03	0408	Green Isle	35	1/28/25	33	35	36	0	32	32	91.43%	
03	0424	Inver Grove Heights	10	9	10	10	10	0	6	6	60.00%	
03	0433	Gaylord	55	1/28/25	52	55	56	3	48	51	92.73%	

Dist	Unit	Unit Location	2025 DNO	Goal Dates Set By National				Junior	Senior	Total	Percent to Date	100%+ Date
				85% by 3/15/25	95% by 5/23/25	100% by 7/4/25	102% by 7/26/25					
03	0447	Prior Lake	10	9	10	10	10	0	7	7	70.00%	
03	0463	Lester Prairie	15	13	14	15	15	0	0	0	0.00%	
03	0491	Bayport	89	76	85	89	91	2	72	74	83.15%	
03	0507	Willernie	51	43	48	51	52	8	35	43	84.31%	
03	0510	Nicollet	60	51	57	60	61	2	43	45	75.00%	
03	0518	North Mankato	84	71	80	84	86	1	60	61	72.62%	
03	0580	Chanhassen	77	1/14/25	73	77	79	0	70	70	90.91%	
03	0586	Lonsdale	79	1/28/25	75	79	81	3	66	69	87.34%	
03	0594	Eagan	13	11	12	13	13	0	11	11	84.62%	
03	0601	New Germany	21	12/9/24	20	21	21	1	17	18	85.71%	
03	0620	Hugo	71	60	67	71	72	1	59	60	84.51%	
03	0643	Savage	56	48	53	56	57	0	47	47	83.93%	
03	1776	Apple Valley	265	225	252	265	270	4	206	210	79.25%	
03 Total			3476					130	2930	3060	88.03%	
04	0039	North St Paul	165	140	157	165	168	8	126	134	81.21%	
04	0168	White Bear Lake	97	82	92	97	99	5	68	73	75.26%	
04	0451	Saint Paul	0	DISBANDED				0	2	2	0.00%	10/24/24
04	0474	Saint Paul	25	1/14/25	24	25	26	4	19	23	92.00%	
04	0542	Saint Paul	173	147	164	173	176	3	131	134	77.46%	
04	0577	Saint Paul	48	41	46	48	49	0	34	34	70.83%	
04	0606	Saint Paul	0	DISBANDED				0	4	4	0.00%	10/24/24
04 Total			508					20	384	404	79.53%	
05	0001	Minneapolis	65	55	62	65	66	5	37	42	64.62%	
05	0099	Minneapolis	44	37	42	44	45	0	24	24	54.55%	
05	0129	Minneapolis	69	59	66	69	70	0	48	48	69.57%	
05	0234	Minneapolis	54	46	51	54	55	0	34	34	62.96%	
05	0435	Richfield	181	154	172	181	185	1	109	110	60.77%	
05	0440	Minneapolis	32	27	30	32	33	0	19	19	59.38%	
05	0511	Minneapolis	18	15	17	18	18	3	10	13	72.22%	
05 Total			463					9	281	290	62.63%	
06	0012	Long Prairie	64	1/28/25	61	64	65	1	55	56	87.50%	
06	0014	Bemidji	49	3/11/25	47	49	50	1	43	44	89.80%	
06	0023	McGregor	29	2/11/25	28	29	30	0	26	26	89.66%	
06	0046	Little Falls	200	1/28/25	190	200	204	13	170	183	91.50%	
06	0049	Pequot Lakes	117	2/21/25	111	117	119	3	102	105	89.74%	
06	0067	Sauk Centre	102	11/12/24	1/14/25	102	104	9	95	104	101.96%	2/21/25
06	0076	Saint Cloud	1	1	1	1	1	0	1	1	100.00%	11/12/24
06	0086	Aitkin	212	2/21/25	201	212	216	6	182	188	88.68%	
06	0101	Melrose	124	11/26/24	11/26/24	124	126	7	115	122	98.39%	
06	0112	Elk River	126	2/21/25	120	126	129	5	109	114	90.48%	
06	0134	Walker	174	2/11/25	165	174	177	6	150	156	89.66%	
06	0137	Royalton	28	11/12/24	1/28/25	28	29	0	27	27	96.43%	
06	0147	Big Lake	56	48	53	56	57	0	44	44	78.57%	
06	0171	Wadena	2	2	2	2	2	0	0	0	0.00%	
06	0193	Becker	41	11/26/24	39	41	42	7	28	35	85.37%	
06	0202	Hackensack	188	12/31/24	3/3/25	188	192	5	174	179	95.21%	
06	0211	Holdingford	58	11/12/24	12/31/24	58	59	2	55	57	98.28%	
06	0212	Park Rapids	171	2/11/25	162	171	174	1	153	154	90.06%	
06	0213	Clarissa	43	12/25/24	1/14/25	1/14/25	44	0	44	44	102.33%	1/14/25
06	0217	Baudette	83	11/26/24	1/14/25	83	85	4	75	79	95.18%	
06	0221	Saint Joseph	39	12/9/24	37	39	40	0	35	35	89.74%	
06	0254	Sauk Rapids	36	31	34	36	37	0	29	29	80.56%	

Dist	Unit	Unit Location	2025 DNO	Goal Dates Set By National				Junior	Senior	Total	Percent to Date	100%+ Date
				85% by 3/15/25	95% by 5/23/25	100% by 7/4/25	102% by 7/26/25					
06	0255	Brainerd	234	199	222	234	239	2	185	187	79.91%	
06	0261	Kimball	143	2/21/25	136	143	146	14	109	123	86.01%	
06	0271	Paynesville	84	3/8/25	80	84	86	0	75	75	89.29%	
06	0284	Cass Lake	40	34	38	40	41	1	29	30	75.00%	
06	0288	Brooten	20	11/5/24	11/26/24	20	20	0	20	20	100.00%	12/17/24
06	0292	Richmond	73	62	69	73	74	0	56	56	76.71%	
06	0293	Browerville	17	11/26/24	16	17	17	0	16	16	94.12%	
06	0298	Foley	47	1/14/25	45	47	48	1	43	44	93.62%	
06	0313	Swanville	17	11/5/24	16	17	17	0	17	17	100.00%	12/17/24
06	0328	Saint Joseph	77	1/28/25	73	77	79	0	69	69	89.61%	
06	0340	Hill City	30	26	29	30	31	0	21	21	70.00%	
06	0341	Pierz	55	10/26/24	52	55	56	4	44	48	87.27%	
06	0350	Upsala	30	26	29	30	31	1	21	22	73.33%	
06	0354	Clear Lake	10	10/26/24	1/14/25	1/14/25	10	2	9	11	110.00%	1/14/25
06	0363	Akeley	7	12/9/24	7	7	7	0	6	6	85.71%	
06	0366	Bertha	35	3/3/25	33	35	36	1	31	32	91.43%	
06	0368	Backus	93	11/5/24	2/11/25	93	95	1	94	95	102.15%	2/21/25
06	0372	Blackduck	50	3/8/25	48	50	51	1	42	43	86.00%	
06	0417	Little Sauk	78	66	74	78	80	17	44	61	78.21%	
06	0428	Waite Park	174	3/3/25	165	174	177	1	159	160	91.95%	
06	0438	Pinewood	15	13	14	15	15	0	11	11	73.33%	
06	0442	Williams	20	10/30/24	19	20	20	1	17	18	90.00%	
06	0443	Ironton	51	43	48	51	52	1	42	43	84.31%	
06	0455	Cold Spring	101	3/8/25	96	101	103	4	88	92	91.09%	
06	0456	Sebeka	46	3/3/25	44	46	47	0	41	41	89.13%	
06	0462	Laporte	55	47	52	55	56	2	42	44	80.00%	
06	0470	Kelliher	23	2/21/25	22	23	23	0	21	21	91.30%	
06	0473	Rice	78	66	74	78	80	3	60	63	80.77%	
06	0482	Albany	95	12/17/24	90	95	97	1	83	84	88.42%	
06	0500	Crosslake	87	1/14/25	3/3/25	87	89	0	85	85	97.70%	
06	0557	Deerwood	42	11/5/24	12/9/24	42	43	0	47	47	111.90%	12/31/24
06	0560	Zimmerman	176	2/11/25	3/3/25	176	180	16	153	169	96.02%	
06	0602	Hillman	75	64	71	75	77	0	61	61	81.33%	
06	0612	Lake Henry	47	2/11/25	3/11/25	47	48	1	45	46	97.87%	
06	0613	Pine River	59	3/3/25	56	59	60	0	53	53	89.83%	
06	0621	St Augusta	60	51	57	60	61	0	49	49	81.67%	
06	0627	Nisswa	136	2/21/25	129	136	139	2	122	124	91.18%	
06	0642	Bowlus	46	12/17/24	44	46	47	0	42	42	91.30%	
06 Total			4469					147	3864	4011	89.75%	
07	0029	Morris	112	2/21/25	106	112	114	4	99	103	91.96%	
07	0058	Browns Valley	72	11/26/24	68	72	73	7	59	66	91.67%	
07	0059	Montevideo	105	1/14/25	100	105	107	1	95	96	91.43%	
07	0069	Granite Falls	48	11/26/24	46	48	49	0	43	43	89.58%	
07	0080	Wheaton	66	2/11/25	63	66	67	3	54	57	86.36%	
07	0104	Litchfield	69	1/28/25	66	69	70	1	59	60	86.96%	
07	0113	Marshall	65	55	62	65	66	0	52	52	80.00%	
07	0126	Cosmos	47	12/17/24	45	47	48	3	39	42	89.36%	
07	0135	Hector	41	11/5/24	11/5/24	41	42	0	40	40	97.56%	
07	0156	Marietta	129	1/14/25	123	129	132	10	110	120	93.02%	
07	0158	Madison	83	71	79	83	85	1	64	65	78.31%	
07	0167	Willmar	207	176	197	207	211	10	150	160	77.29%	
07	0169	Clarkfield	31	26	29	31	32	2	21	23	74.19%	

Dist	Unit	Unit Location	2025 DNO	Goal Dates Set By National				Junior	Senior	Total	Percent to Date	100%+ Date
				85% by 3/15/25	95% by 5/23/25	100% by 7/4/25	102% by 7/26/25					
07	0173	Tracy	36	31	34	36	37	0	24	24	66.67%	
07	0175	Villard	0	DISBANDED				0	2	2	0.00%	10/24/24
07	0186	Olivia	28	1/14/25	27	28	29	0	25	25	89.29%	
07	0188	Evansville	17	12/25/24	16	17	17	0	16	16	94.12%	
07	0199	Minneota	26	22	25	26	27	1	17	18	69.23%	
07	0204	Echo	36	11/12/24	12/9/24	36	37	4	31	35	97.22%	
07	0205	Fairfax	28	12/9/24	27	28	29	0	26	26	92.86%	
07	0223	Kerkhoven	27	23	26	27	28	0	22	22	81.48%	
07	0229	Sacred Heart	17	1/14/25	16	17	17	4	11	15	88.24%	
07	0237	Balaton	13	11	12	13	13	0	13	13	100.00%	
07	0252	Maynard	28	24	27	28	29	0	23	23	82.14%	
07	0253	Lowry	57	12/17/24	54	57	58	7	45	52	91.23%	
07	0258	Clinton	39	3/3/25	37	39	40	3	32	35	89.74%	
07	0268	Kensington	25	21	24	25	26	0	18	18	72.00%	
07	0273	Garvin	18	15	17	18	18	0	18	18	100.00%	11/26/24
07	0278	Brandon	32	11/26/24	11/26/24	32	33	3	30	33	103.13%	12/31/24
07	0297	Graceville	60	1/14/25	2/11/25	60	61	0	57	57	95.00%	
07	0302	Beardsley	31	26	29	31	32	2	24	26	83.87%	
07	0321	Elbow Lake	8	7	8	8	8	0	4	4	50.00%	
07	0351	Barrett	33	12/9/24	31	33	34	0	29	29	87.88%	
07	0357	Ashby	83	2/21/25	79	83	85	1	73	74	89.16%	
07	0359	Milan	21	18	20	21	21	2	13	15	71.43%	
07	0375	Atwater	30	1/14/25	29	30	31	2	24	26	86.67%	
07	0378	Herman	29	11/26/24	28	29	30	0	26	26	89.66%	
07	0381	Eden Valley	104	88	99	104	106	5	82	87	83.65%	
07	0393	Hoffman	16	14	15	16	16	0	11	11	68.75%	
07	0420	Raymond	37	31	35	37	38	4	24	28	75.68%	
07	0426	Wendell	18	15	17	18	18	0	15	15	83.33%	
07	0430	Bird Island	95	81	90	95	97	13	62	75	78.95%	
07	0441	Bellingham	78	3/3/25	74	78	80	9	60	69	88.46%	
07	0457	Porter	15	13	14	15	15	0	12	12	80.00%	
07	0483	Dassel	33	28	31	33	34	5	22	27	81.82%	
07	0485	Clara City	33	12/9/24	31	33	34	2	28	30	90.91%	
07	0524	Saint Leo	15	3/3/25	14	15	15	0	13	13	86.67%	
07	0527	Millerville	36	12/31/24	34	36	37	0	31	31	86.11%	
07	0537	New London	148	2/21/25	141	148	151	13	115	128	86.49%	
07	0545	Spicer	90	77	86	90	92	7	64	71	78.89%	
07	0556	Wood Lake	20	12/17/24	19	20	20	0	18	18	90.00%	
07	0629	Chokio	26	2/21/25	25	26	27	0	24	24	92.31%	
07 Total			2561					129	2069	2198	85.83%	
08	0060	Grand Rapids	89	76	85	89	91	2	63	65	73.03%	
08	0071	Duluth	299	254	284	299	305	1	247	248	82.94%	
08	0109	Two Harbors	95	81	90	95	97	3	74	77	81.05%	
08	0122	Deer River	28	12/25/24	27	28	29	0	25	25	89.29%	
08	0182	Effie	31	26	29	31	32	0	15	15	48.39%	
08	0222	Hibbing	45	12/25/24	12/25/24	45	46	4	39	43	95.56%	
08	0241	Aurora	85	2/11/25	81	85	87	0	75	75	88.24%	
08	0248	Ely	76	2/21/25	72	76	78	0	68	68	89.47%	
08	0262	Cloquet	66	56	63	66	67	0	52	52	78.79%	
08	0307	Nashwauk	49	42	47	49	50	0	34	34	69.39%	
08	0379	Moose Lake	28	24	27	28	29	1	28	29	103.57%	9/17/24
08	0413	Grand Marais	49	42	47	49	50	2	33	35	71.43%	

Dist	Unit	Unit Location	2025 DNO	Goal Dates Set By National				Junior	Senior	Total	Percent to Date	100%+ Date
				85% by 3/15/25	95% by 5/23/25	100% by 7/4/25	102% by 7/26/25					
08	0415	Barnum	15	12/17/24	14	15	15	0	13	13	86.67%	
08	0432	Warba	24	20	23	24	24	1	23	24	100.00%	11/12/24
08	0452	Keewatin	32	27	30	32	33	0	22	22	68.75%	
08	0476	Lawrence Lk Twshp	41	35	39	41	42	2	26	28	68.29%	
08	0494	Big Falls	11	9	10	11	11	0	9	9	81.82%	
08	0499	Northome	27	12/31/24	26	27	28	0	24	24	88.89%	
08	0562	Brookston	11	9	10	11	11	0	9	9	81.82%	
08	0575	Goodland	16	10/15/24	15	16	16	0	15	15	93.75%	
08 Total			1117					16	894	910	81.47%	
09	0015	Detroit Lakes	139	118	132	139	142	6	110	116	83.45%	
09	0016	Bagley	190	3/8/25	181	190	194	9	162	171	90.00%	
09	0017	Pelican Rapids	0	0	0	0	0	0	0	0	0.00%	
09	0020	Crookston	105	89	100	105	107	11	77	88	83.81%	
09	0021	Moorhead	203	173	193	203	207	11	158	169	83.25%	
09	0022	Red Lake Falls	152	3/3/25	144	152	155	17	116	133	87.50%	
09	0024	Roseau	116	99	110	116	118	11	87	98	84.48%	
09	0025	Warroad	41	2/11/25	39	41	42	0	36	36	87.80%	
09	0027	Warren	163	12/17/24	155	163	166	15	139	154	94.48%	
09	0030	Fergus Falls	37	31	35	37	38	0	31	31	83.78%	
09	0031	Mahnomen	24	20	23	24	24	0	16	16	66.67%	
09	0035	Alvarado	58	49	55	58	59	6	40	46	79.31%	
09	0088	Greenbush	38	32	36	38	39	2	29	31	81.58%	
09	0114	Fosston	17	14	16	17	17	0	13	13	76.47%	
09	0117	Thief River Falls	204	173	194	204	208	3	170	173	84.80%	
09	0148	Dent	39	11/26/24	37	39	40	2	35	37	94.87%	
09	0153	Barnesville	94	80	89	94	96	1	71	72	76.60%	
09	0157	East Grand Forks	315	268	299	315	321	7	237	244	77.46%	
09	0159	Oklee	17	14	16	17	17	0	14	14	82.35%	
09	0162	Grygla	20	17	19	20	20	0	16	16	80.00%	
09	0181	Lake Park	17	1/14/25	16	17	17	0	17	17	100.00%	
09	0214	Lancaster	82	1/28/25	78	82	84	10	61	71	86.59%	
09	0238	Fertile	33	28	31	33	34	0	25	25	75.76%	
09	0242	Fisher	54	12/17/24	51	54	55	0	50	50	92.59%	
09	0256	Clearbrook	52	11/26/24	49	52	53	4	43	47	90.38%	
09	0283	Deer Creek	19	16	18	19	19	0	16	16	84.21%	
09	0304	Gonvick	49	1/14/25	47	49	50	0	43	43	87.76%	
09	0331	Oslo	27	23	26	27	28	1	20	21	77.78%	
09	0353	Argyle	109	12/9/24	104	109	111	30	71	101	92.66%	
09	0371	Roosevelt	34	29	32	34	35	1	33	34	100.00%	12/25/24
09	0382	Hawley	27	23	26	27	28	0	22	22	81.48%	
09	0390	Stephen	18	12/17/24	17	18	18	0	17	17	94.44%	
09	0402	Halstad	6	5	6	6	6	0	6	6	100.00%	11/5/24
09	0427	Newfolden	32	1/14/25	30	32	33	0	28	28	87.50%	
09	0431	Twin Valley	23	20	22	23	23	1	16	17	73.91%	
09	0434	Hendrum	12	10	11	12	12	0	9	9	75.00%	
09	0436	Waubun	34	29	32	34	35	0	23	23	67.65%	
09	0444	Middle River	135	115	128	135	138	17	97	114	84.44%	
09	0445	Karlstad	62	11/26/24	1/28/25	62	63	6	59	65	104.84%	2/21/25
09	0466	Strandquist	13	11	12	13	13	0	13	13	100.00%	
09	0489	Underwood	39	33	37	39	40	0	30	30	76.92%	
09	0505	Gary	47	11/26/24	45	47	48	0	44	44	93.62%	
09	0603	Gully	19	16	18	19	19	1	15	16	84.21%	

Dist	Unit	Unit Location	2025 DNO	Goal Dates Set By National				Junior	Senior	Total	Percent to Date	100%+ Date
				85% by 3/15/25	95% by 5/23/25	100% by 7/4/25	102% by 7/26/25					
09	0623	Plummer	29	25	28	29	30	0	24	24	82.76%	
09 Total			2944					172	2339	2511	85.29%	
10	0051	Pine City	104	88	99	104	106	1	77	78	75.00%	
10	0083	Lindstrom	8	7	8	8	8	1	8	9	112.50%	10/30/24
10	0085	North Branch	147	125	140	147	150	3	114	117	79.59%	
10	0093	Rush City	13	11	12	13	13	0	10	10	76.92%	
10	0102	Anoka	183	2/11/25	174	183	187	7	156	163	89.07%	
10	0118	Wayzata	193	3/8/25	183	193	197	20	149	169	87.56%	
10	0131	Maple Lake	75	64	71	75	77	4	57	61	81.33%	
10	0139	Harris	28	2/11/25	27	28	29	6	18	24	85.71%	
10	0145	Howard Lake	44	37	42	44	45	5	30	35	79.55%	
10	0151	Sandstone	23	20	22	23	23	0	17	17	73.91%	
10	0163	Willow River	23	20	22	23	23	0	18	18	78.26%	
10	0172	Osseo	240	12/17/24	228	240	245	9	217	226	94.17%	
10	0178	Milaca	105	89	100	105	107	0	87	87	82.86%	
10	0201	Mora	62	53	59	62	63	0	43	43	69.35%	
10	0209	Cokato	59	50	56	59	60	2	45	47	79.66%	
10	0216	Princeton	125	3/3/25	119	125	128	5	102	107	85.60%	
10	0259	Excelsior	120	102	114	120	122	6	89	95	79.17%	
10	0260	Monticello	199	169	189	199	203	10	159	169	84.92%	
10	0270	Buffalo	71	12/25/24	67	71	72	4	59	63	88.73%	
10	0282	St Louis Park	70	1/14/25	2/11/25	70	71	0	68	68	97.14%	
10	0290	Cambridge	67	1/14/25	64	67	68	4	54	58	86.57%	
10	0303	Fridley	142	121	135	142	145	4	112	116	81.69%	
10	0305	Waverly	53	3/11/25	50	53	54	0	46	46	86.79%	
10	0312	Stacy	6	5	6	6	6	0	5	5	83.33%	
10	0320	Hopkins	148	126	141	148	151	7	81	88	59.46%	
10	0323	Clearwater	60	3/8/25	57	60	61	0	52	52	86.67%	
10	0334	Coon Rapids	109	93	104	109	111	2	86	88	80.73%	
10	0347	Beroun	17	14	16	17	17	0	12	12	70.59%	
10	0377	Delano	87	74	83	87	89	3	63	66	75.86%	
10	0395	Onamia	58	49	55	58	59	0	46	46	79.31%	
10	0398	Mound	119	101	113	119	121	9	92	101	84.87%	
10	0513	New Brighton	0	0	0	0	0	0	0	0	0.00%	
10	0514	Maple Plain	60	51	57	60	61	3	40	43	71.67%	
10	0523	Golden Valley	65	55	62	65	66	0	50	50	76.92%	
10	0550	Bloomington	105	89	100	105	107	5	76	81	77.14%	
10	0563	Bruno	18	3/3/25	17	18	18	0	16	16	88.89%	
10	0566	Lino Lakes	95	1/28/25	2/11/25	95	97	5	88	93	97.89%	
10	0567	Saint Michael	123	105	117	123	125	4	92	96	78.05%	
10	0600	Champlin	44	37	42	44	45	2	14	16	36.36%	
10	0622	Saint Francis	21	2/21/25	2/21/25	21	21	0	21	21	100.00%	3/3/25
10	0630	Brooklyn Center	60	51	57	60	61	1	44	45	75.00%	
10	0640	Ogilvie	42	36	40	42	43	3	30	33	78.57%	
10 Total			3391					135	2643	2778	81.92%	
Grand Total			26045					1117	21166	22283	85.56%	